

# atHome

June 2004

## Save Energy and Save Money with an Energy Star™ Home

### Call the Energy Experts!

Energy experts are available at 1-800-628-8413 to explain how easy it is to build an ENERGY STAR™ Home. No matter what type of home you're building, colonial or contemporary, large or small, it can be built to the high performance standards of ENERGY STAR™ Homes. This service is provided by PSNH at no charge.

When you receive your ENERGY STAR™ Home packet, all you have to do is complete and return the enclosed application form, along with your house plans and a deposit of \$75. This deposit will be refunded to you if your home is certified as an ENERGY STAR™ Home.

### Your Home Energy Rating

Energy experts will review your plans and conduct an assessment to determine the energy efficiency of your home as it is currently designed. A Home Energy Rating is a nationally recognized system to evaluate all the features of your home, including structure and foundation type, insulation levels, heating and cooling systems, air tightness, windows, water heating equipment and appliances, to determine how much energy will be needed to operate your home. Your home is rated on a 0-100 point system, with 100 being the most energy efficient. To meet ENERGY STAR™ Home guidelines, your home must achieve a score of 86. If the home doesn't score an 86, your ENERGY STAR™ Home expert will make recommendations for energy-saving improvements to get your home at or above the 86 score. There's a variety of simple design options that you and your builder can receive to help improve your home's energy efficiency.

In addition to these energy saving recommendations, you may be eligible for up to \$2,500 in utility incentives for high efficiency heating/cooling equipment, appliances and lighting.

### Your Next Step

To learn more about the ENERGY STAR™ Homes program, or if you are interested in participating in this program please call 1-800-628-8413 or visit [www.energystarhomes.com](http://www.energystarhomes.com).



## PSNH/NASA Scholarships

PSNH is helping New Hampshire college students reach for the stars with PSNH/NASA Scholarships. PSNH is in the second year of its partnership with the New Hampshire Community Technical Colleges Foundation offering 120 students \$1,000 scholarships. Over a three-year period, PSNH's donation is matched with a grant from the National Aeronautics and Space Administration through the New Hampshire Space Grant Consortium.

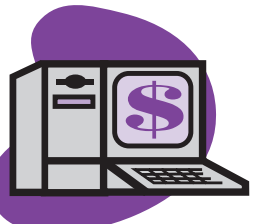
PSNH/NASA scholarships are designed to provide opportunities for underrepresented and non-traditional students. These scholarships will be awarded to full-time students who are enrolled in associate degree programs in science, mathematics, engineering, or technology and who have a demonstrated interest in pursuing their education further. Applications for the fall semester are due by July 1, 2004. For more information, or to download an application, visit the New Hampshire Community Technical College website at [www.nhctc.edu](http://www.nhctc.edu).



## Receive Your PSNH Bill Electronically!

**R**eceiving your bill electronically is a convenient, environmentally-conscious alternative to receiving a paper copy. If you sign up for electronic bill delivery, PSNH will send you an email containing an internet link which can be used to view your bill after your meter is read each month. This link provides the same information as a paper bill, including a view of your actual electric bill, a copy of the At Home newsletter and any special inserts.

**You can register for eBilling, as well as many other online services, by visiting our website at [psnh.com](http://psnh.com).**



Supporting Your Life in Every Moment



**Public Service  
of New Hampshire**

The Northeast Utilities System

## Change in PSNH Check Processing

**B**eginning later this month, PSNH and its parent company, Northeast Utilities, will be changing the bank that processes customer payments. To increase the efficiency of check processing, customer checks will now be processed electronically. If you pay by check, you will not receive the actual paper check back in your monthly bank statement. Your PSNH payment will show up as an electronic payment on your statement. If your bank still provides the cancelled paper checks in your monthly bank statement, and you would like to continue to receive your PSNH check back, please contact our 24-hour customer service center at 1-800-662-7764 and request that your check be returned to you with your bank statement each month.

**For quick and easy payment on your PSNH account, visit our online services at [psnh.com](http://psnh.com), and select YOUR ACCOUNT and choose QUICK PAY. It's fast, free and will save you time!**

## Generator Safety

**S**ome households use a back-up generator to supply them with power during an outage. Proper installation of generators is essential to prevent a house fire and avoid feeding electricity back into lines and endangering the lives of PSNH line workers. If you own a generator, it is critical for your safety and the safety of our employees that PSNH is aware you have a generator and that your equipment is properly installed. If you have not already done so, please contact PSNH so that we can note the location of the generator and confirm that a safe transfer switch is used to switch between stand-by and utility power. We may also be able to help with any questions about generators.

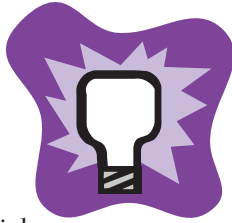
### Other important considerations:

Before you buy a generator, make sure it's the right size for your needs. Always have a qualified electrician install the generator, which must be connected to your home's wiring through a special transfer switch. This will ensure that the house wires are isolated from the utility wires.

Generators must also be vented outside and must never be refueled while operating. You may need a town permit or an official inspection for the generator.

**You can register your generator with us in the following ways:**

- Visit our website at [psnh.com](http://psnh.com)
- Email us at [psnhesd@psnh.com](mailto:psnhesd@psnh.com)
- Call (603)634-2312
- Write to our Supplemental Energy Sources Department at PSNH, Supplemental Energy Sources Department, P.O. Box 330, Manchester, NH 03105



## Electrical Tool Safety Reminders

- ✓ **If you plan to use an electrical lawn mower or hedge trimmers, be sure to keep the cord behind you.** Be careful not to cut or damage the cord. It's best to sling it over your shoulder or loop it in your hand. And don't forget to cut away from the cord, not towards it.
- ✓ **Keep children away from the area where you are operating electric yard tools.** Eliminate the possibility of them tripping or moving the cord resulting in an avoidable accident.
- ✓ **Always unplug the electrical equipment if you have an obstruction.** After the power has been disconnected, free the obstruction before plugging it back in. Always keep electrical tools unplugged when maintaining and repairing.
- ✓ **Be sure your tools are in good operating condition.** Maintain them and inspect the grounding connections. It's important to read the manufacturers operating instructions for specific electrical precautions.

## Sign-Up Now for the PSNH Senior Circuit!



**P**SNH provides a quarterly publication featuring news articles of interest to adults 55 and older. To sign up for our Senior Circuit Newsletter, please send in the following information and your name will be added to our mailing list. *(This list is not shared or sold. It is completely private.)*

NAME \_\_\_\_\_

ADDRESS \_\_\_\_\_

TOWN \_\_\_\_\_ STATE \_\_\_\_\_ ZIP \_\_\_\_\_

**Mail to: PSNH, Senior Circuit, PO Box 330, Manchester, NH 03105-0330**

Published for PSNH customers.

PSNH, 780 North Commercial Street, Manchester, New Hampshire 03101

Ready to serve you 24 hours a day at 1-800-662-7764.



 **psnh.com**