

Contact us

For more information on this or other
PSNH projects, please call **1-800-662-7764**
or visit www.psnh.com.



**Public Service
of New Hampshire**

The Northeast Utilities System

PSNH



Scobie Pond Rebuild Project

New Distribution Substation

Preparing Today for NH's Tomorrow

 psnh.com

Facts

Project Benefits

Public Service of New Hampshire (PSNH) is in the process of upgrading the electrical distribution system that serves the Derry/Londonderry region. This upgrade is needed to ensure that the local electric system can handle increased demand and future economic development in the region. It will include the complete rebuilding of PSNH's Scobie Pond Distribution Substation in Londonderry, as well as the construction of additional distribution power lines.

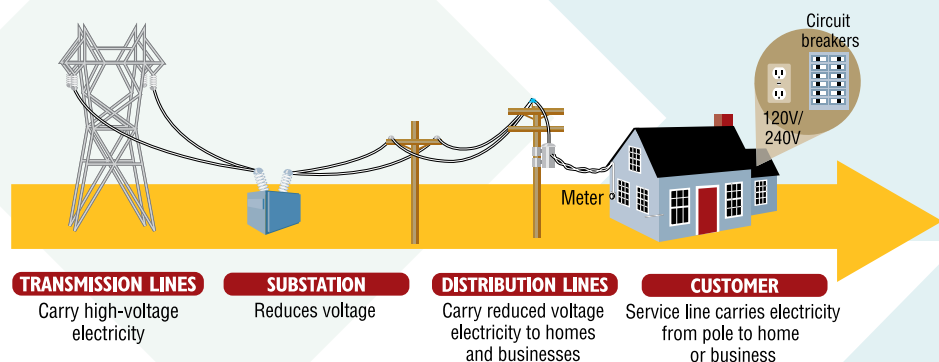
The Scobie Pond Distribution Substation is intended to serve approximately 4,500 PSNH customers and 1,400 New Hampshire Electric Cooperative customers, primarily in the Town of Derry.

The rebuilt substation will replace a 1960s-era substation, which has experienced an increasing number of animal-related outages, with state-of-the-art equipment and technology. Rebuilding the substation will allow PSNH to improve reliability by:

- ◆ Installing two new 30-megawatt transformers, to better support energy demand
- ◆ Installing new equipment which will help to reduce animal-related outages
- ◆ Increasing the capability of the substation to feed five distribution lines, with the ability to add a sixth line in order to better support customer load growth. The existing substation has only three lines.

What is a Substation?

A substation's function is to provide points of delivery for the transmission system, which operates at high voltages in order to deliver power efficiently over long distances. Most substations reduce transmission voltage levels down to the distribution level that is required to serve homes and businesses. The rebuilt Scobie Pond Distribution Substation will reduce voltage from a transmission-level voltage of 115,000 volts to a distribution-level voltage of 12,470 volts. Substation equipment can be controlled locally or remotely.



Project Location

The proposed substation project is located on existing PSNH property on Scobie Pond Road, at the site of the existing PSNH distribution substation, which will be removed. This site is adjacent to PSNH's transmission substations on Scobie Pond and Brewster Roads.

Community Impact

To minimize impact on its neighbors, PSNH purchases more expensive, low-sound-level transformers for its substations. The substation at this site will have a maximum noise level of 61 decibels at the source, which is 20 decibels lower than the noise level for typical distribution substations. New substations are also built lower in profile, so they are less visible to the surrounding community.

Area Electric Demand

Electricity usage in PSNH's "Derry Planning Region" (one of 12 regions statewide that PSNH delineates for planning purposes) has grown by approximately four percent annually over the last decade, making it one of the fastest-growing areas in the state. This region is also projected to have among the highest growth in peak load in New Hampshire within the next 10 years.

The new Scobie Pond substation is being designed to handle this rate of growth for today, as well as anticipated growth throughout the region. Although growth rates in this area have slowed during the current recession, this region of the state remains the most promising in terms of future job growth and developable land.

Estimated Project Cost

PSNH estimates that the cost of the Scobie Pond substation rebuild project will be approximately \$8 million.

Project Timeline

PSNH expects to have the substation's first transformer in service in June of 2011, and the second in service by the end of 2011. The project schedule is contingent upon receiving approval for all applicable siting, permitting, and regulatory requirements.